



Taralay® Impression

Heterogeneous Sheet

Gerflor®



1314 WALNUT BROWN

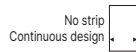


0725 SYCAMORE LIGHT BROWN



0727 SYCAMORE VANILLA

For visual of full design, please see photo in design book



0760 MOON ISLAND



1110 RIVAU NATURE

For visual of full design, please see photo in design book



0773 PORTOBELLO

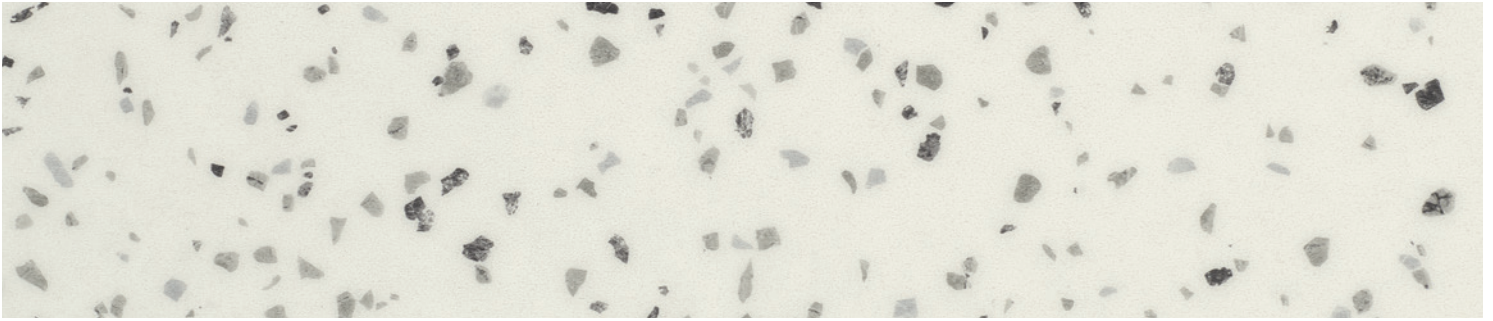




1093 CHARME KRAFT



0723 CHARME PECAN



1058 TERRAZZO BLACK & WHITE



1060 TERRAZZO NAPOLI



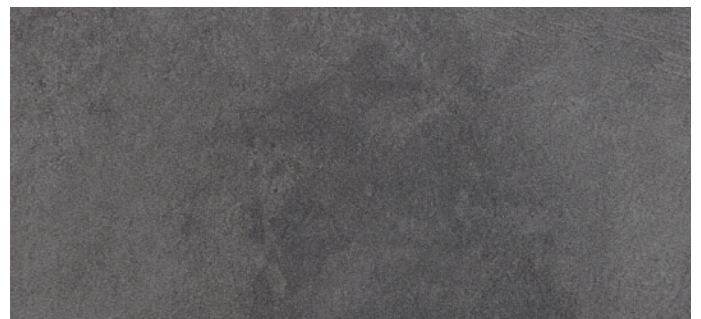
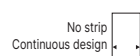
1059 TERRAZZO BRESCIA



0720 INFINITY AUBE



0680 INFINITY GREIGE



1057 RIVERSIDE





1100 HABANA 3D BLOSSOM

For visual of full design, please see photo in design book



1070 HABANA 3D VINALES



1069 HABANA 3D TRINIDAD



1104 WOOD FUSION NATURE

For visual of full design, please see photo in design book



1054 NATURE OAK BROWN



1053 NATURE OAK BLOND

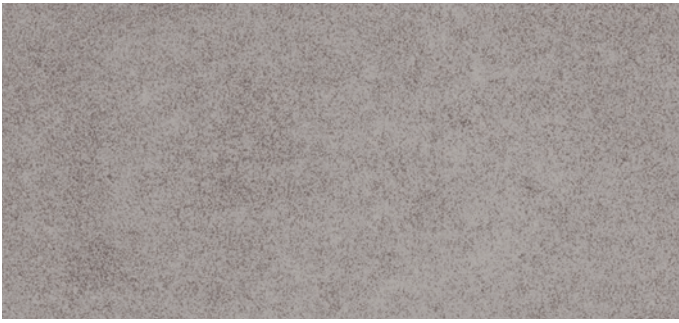


1055 NATURE OAK CLEAR



1056 NATURE OAK DARK

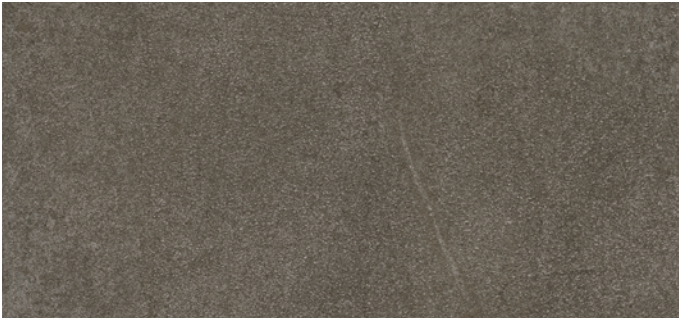




0543 CEMENTO BRESCIA



0524 CEMENTO CAPRI



1025 CEMENTO FIRENZE



0523 CEMENTO GENOVA



1024 CEMENTO NAPOLI



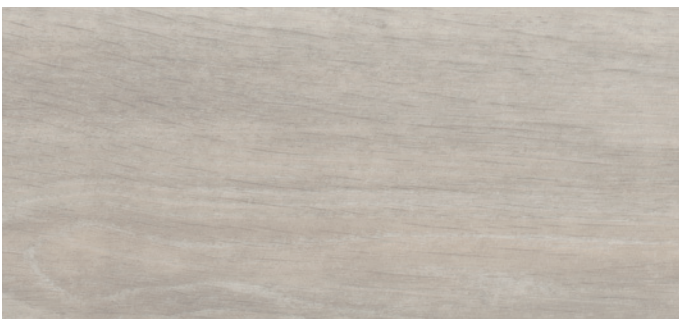
1026 CEMENTO ROMA



1028 ROUGH BEIGE



1029 ROUGH GREY

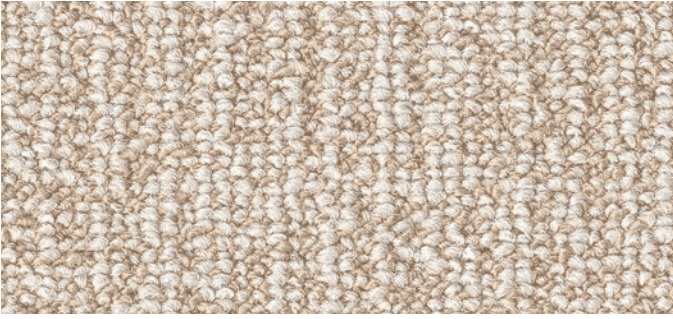


0373 NOMA ICE

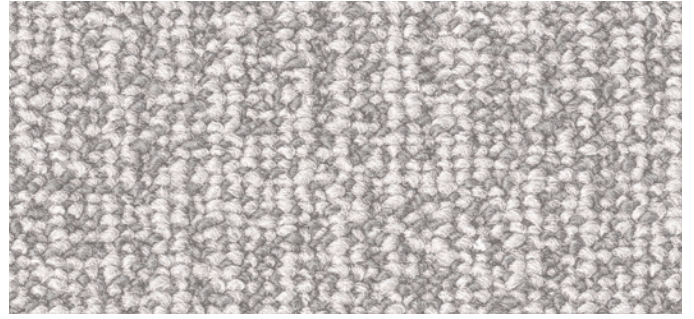


0519 NOMA BEIGE

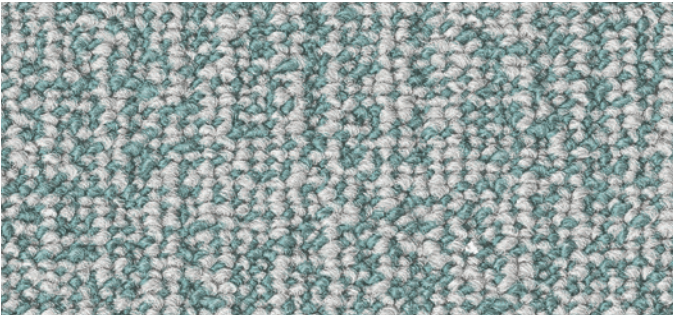




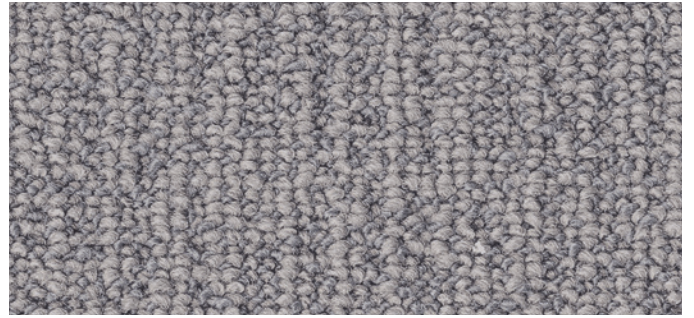
1073 PURE WOOL BEIGE



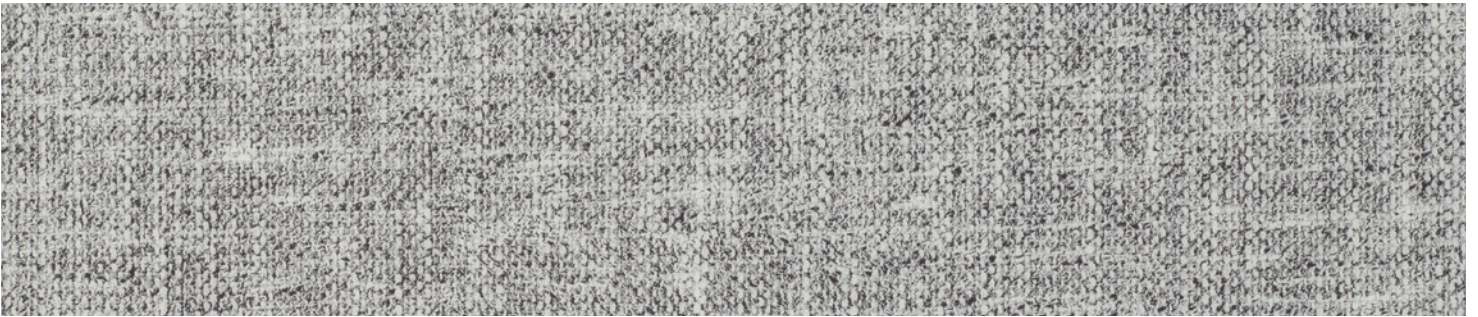
1072 PURE WOOL GREY



1074 PURE WOOL TEAL



1071 PURE WOOL TAUPE



1067 GENTLEMEN BLACK & WHITE



0770 GENTLEMEN CLEAR



1068 GENTLEMEN DENIM



1064 FINESSE NATURE



1063 FINESSE BROWN

DESCRIPTION	STANDARDS	REQUIREMENTS	TARALAY IMPRESSION COMPACT
PRODUCT DESCRIPTION			
Reference Specification*	ASTM F1303	-	Type 1, Grade 1
Backing	ASTM F1303	-	Class B
Construction	-	-	Heterogeneous Sheet Flooring
Surface Treatment/Maintenance	-	-	Protocolsol® / No wax for life
Wearlayer Thickness	ASTM F410	-	28 mil (0.7 mm)
Gauge Total Thickness	ASTM F386	≤ 0.075"	0.080" (2.0 mm)
Roll Width	-	-	6' 6" (2.0 m)
Roll Length	-	-	82' (25 m)
Coverage / Roll	-	-	538 ft² (50 m²)
Weight	-	-	0.54 lb/ft² (2635 kg/m²)
PERFORMANCE			
Static Load Resistance	ASTM F970	≤ 0.005"	Meets Requirements
Abrasion	ASTM F510	-	Meets Requirements
Indentation - Residual	ASTM F1914	-	Meets Requirements
Flexibility	ASTM F137	> 1.5"	Meets Requirements
Chemical & Stain Resistance	ASTM F925	-	Meets Requirements
Resistance to Heat	ASTM F1514	ΔE ≤ 8	Meets Requirements
Resistance to Light	ASTM F1515	ΔE ≤ 8	Meets Requirements
Coefficient of Friction	ASTM D2047	-	0.57 (Leather) / 0.95 (neolite)
Impact Sound Installation	ASTM E492	-	43 dB
Smoke Density (Flaming and Non-Flaming)	ASTM 662	-	Meets Requirements
Fire Rating - Smoke Evolution	ASTM E648	Class 1	Meets Requirements
ENVIRONMENT HEALTH & SAFETY			
Antibacterial Activity (E. Coli - S. Aureus - MRSA) after 24hr	ISO 22196	-	Inhibits spread of infections at 99%
Antiviral Activity (Human Coronavirus 229E)	ISO 21702	-	99.7% after 2 hrs
Manufacturing Plant Certifications	ISO 9001, 14001, 45001, 50001	-	-
Environmental Product Declaration (EPD)	LEED v4.1 MR BPDO	-	Product-Specific Type III
Material Ingredients: Health Product Declaration (HPD)	LEED v4.1 MR BPDO	-	Self-Declared
Material Ingredients: REACH Optimization	LEED v4.1 MR BPDO	-	100% REACH Compliant
Indoor Air Quality / Low Emitting Materials	LEED v4.1 EQc2	-	FloorScore® Certified
Production Waste	LEED v4.1 EQc3	-	100% Manufacturing Waste Recycled
TVOC after 28 days	ISO 16000-6	-	≤10µg/m3
WARRANTY	10-year limited manufacturer warranty when installed in accordance with Gerflor's installation instructions on gerflorusa.com		

*Rubber leaves indelible stains on synthetic floorings; do not use mats with rubber backing and replace tubular furniture feet with those made of PVC or polyamide. Place mats of sufficient length at entrances to reduce outside sources of dirt.

** The best defense against the spread of infections is the implementation of an effective cleaning method.

